



PRISTINE NEW ZEALAND

Wake up in Paradise...

COVERING: CHRISTCHURCH – LAKE TEKAPO –
MOUNT COOK – QUEENSTOWN – FRANZ JOSEF –
ROTORUA – AUCKLAND

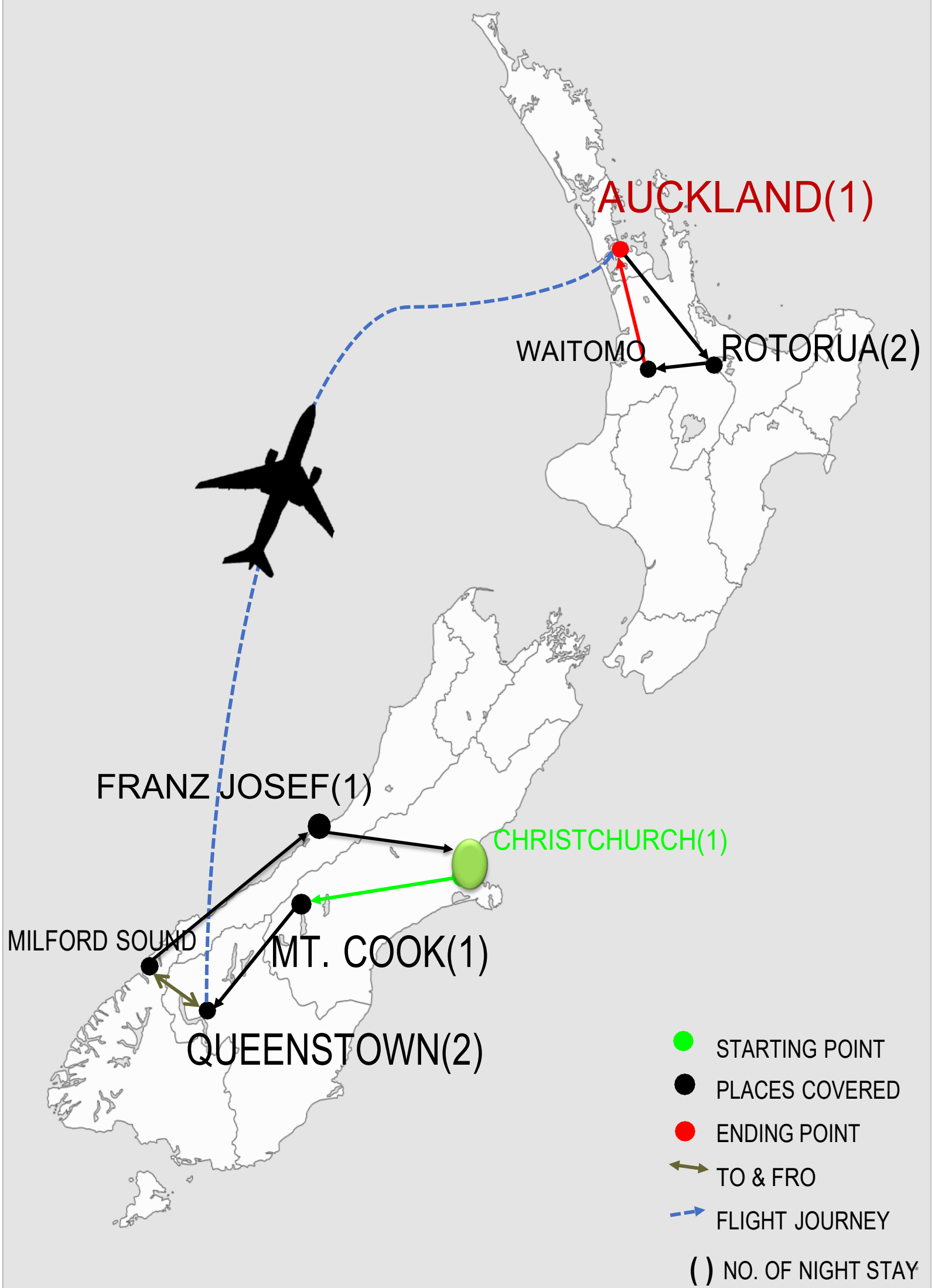
TOUR HIGHLIGHTS

- ❖ EX-KOLKATA DEPARTURE
- ❖ ROUND TRIP ECONOMY CLASS AIRFARE FROM KOLKATA
- ❖ ACCOMMODATION AT 4 STAR CATEGORY HOTELS
- ❖ ALL TRANSFERS BY AIR-CONDITIONED LUXURY COACH
- ❖ DELICIOUS CUISINE – MEALS INCLUDING DAILY BREAKFASTS, 2 LUNCHESES & DINNERS
- ❖ VISIT TE PUIA GEO THERMAL RESERVE
- ❖ GUIDED TOUR OF WAITOMO GLOW WORM CAVES
- ❖ MAORI CULTURAL SHOW IN ROTORUA
- ❖ 360 DEGREE VIEW OF AUCKLAND FROM SKY TOWER
- ❖ VISIT KELLY TARLTON'S SEA LIFE AQUARIUM
- ❖ VISIT TO ARROWTOWN
- ❖ SKYLINE GONDOLA RIDE AT BOB'S PEAK IN QUEENSTOWN
- ❖ WHOLE DAY TOUR OF MILFORD SOUND
- ❖ VISIT TO LAKE TEKAPO & LAKE PUKAKI
- ❖ CITY TOUR OF AUCKLAND & CHRISTCHURCH
- ❖ VISIT TO FOX GLACIER AND LAKE MATHESON IN FRANZ JOSEF
- ❖ EXPERIENCED AND COURTEOUS TOUR MANAGER THROUGHOUT THE TOUR FROM KOLKATA

FLIGHT DETAILS

BY
TBA

DATE OF DEPARTURE
11 NOVEMBER 2026
13 MARCH 2027



DAY-WISE ITINERARY

Day 1: KOLKATA

MEAL ON BOARD

Greetings from **GO everywhere** Holidays- the one stop provider for all your travel needs and requirements. Embark on a journey to one of the most beautiful places on Earth. Your presence at Netaji Subhash Chandra Bose International Airport 3 hours prior to the departure is mandatory. Our courteous and experienced Tour Manager will meet you at the airport and help you with all the formalities before boarding the flight. Your luggage will be tagged till CHRISTCHURCH.

Day 2: SINGAPORE

LIGHT LUNCH –
MEAL ON BOARD

Arrive at Singapore. Check-in to the hotel to freshen up and relax for some time after lunch. In the evening, arrive at the airport to board the next connecting flight from Singapore to Christchurch.

Day 3: CHRISTCHURCH – LAKE TEKAPO

MEAL ON BOARD -
DINNER

Welcome to New Zealand.

Arrive at Christchurch in the morning. Complete all the immigration formalities before hopping on to our luxurious coach and Drive over a lovely road-side scenery over golden tussock land, winding rivers and the impressive Canterbury Plains before arriving in the Garden City of Christchurch.

Christchurch is the largest city in the South Island and the third most populous city in New Zealand. In February 2011 an earthquake measuring magnitude 6.3 struck the city, claiming a total of 185 lives. The city has experienced growth since the disaster and has made substantial progress in rebuilding the city into its former glory.

Proceed for one hour orientation sightseeing tour of Christchurch.

Later, proceed to **Lake Tekapo** region which is almost 3 hours' drive from Christchurch. In Lake Tekapo area, we will see the majestic setting of the **Church of the Good Shepherd**. The Church is a sacred site set within a residential and heritage precinct that attracts visitors from all over the world.

Check-in to the hotel for an overnight stay followed by dinner.

DAY 4: LAKE TEKAPO - MT COOK - QUEENSTOWN

BREAKFAST- DINNER

After breakfast, we will check-out from the hotel and proceed to visit **Lake Pukaki**. Drive through Mount Cook area through the rugged and beautiful landscapes of the central Otago region. We will give a photostop while driving through Mt. Cook view point.

En route, enjoy the panoramic beauty of **Arrowtown** - a village which was once the hurley burley centre of the gold rush. The town has been preserved with its main street still retaining the flavor of the 1860's. Historic miners' houses are shaded by tremendous oak trees.

Then, drive to Queenstown and proceed for the **Skyline Gondola Ride**. Ride to the top of **Bob's Peak** and back down with a round-trip ticket for the steepest cable car lift in the southern hemisphere! Skyline Queenstown is located an easy 5-minute walk from central Queenstown. Sit back and relax on your gondola ride, and soak in the stunning views. You will be carried 450 meters above Queensland and **Lake Wakatipu** to the top of Bob's peak. Experience the spectacular 220-degree panorama with breath taking views of Coronet Peak, the remarkable Walter and Cecil Peak.

Later, we will check-in to the hotel. Have dinner in an Indian restaurant and stay overnight in Queenstown.

DAY 5: QUEENSTOWN – MILFORD SOUND	BREAKFAST – LUNCH - DINNER
--	-------------------------------

After breakfast, embark for a thrilling **trip to Milford Sound** following the southern arm of Lake Wakatipu to Lumsden and onward to Lake Te Anau travelling through Eglinton Valley and Homer Tunnel.

If Milford Sound is the 8th wonder of the world, the road to Milford is surely the 9th. The overland journey is a spectacular showcase of sheer mountains and towering cliffs, rugged valleys and the native rain forest surrounded by spectacular waterfalls and glacial lakes. On the way, we will give a photo stop at Teanua.

After reaching Milford Sound, climb aboard a purpose-built catamaran and set sail across the water to discover the unique wildlife of one of South Island's most picturesque attractions.

Listen to a fascinating commentary about the region from a specialist nature guide, join the skipper in the open wheelhouse, and say hello to the native seals basking on the rocks as you pass them by. Also enjoy the magnificent views of the Mitre Peak and Bowen Falls.

Later drive back to Queenstown. Have Indian dinner and stay overnight in the hotel.

DAY 6: QUEENSTOWN – FRANZ JOSEF	BREAKFAST – DINNER
--	--------------------

After breakfast, check-out from the hotel at Queenstown and proceed towards Franz Josef.

A unique and spectacularly scenic spot, Franz Josef is the perfect base for a myriad of adventure, entertainment and sightseeing attractions. Franz Josef township is about 5 kms from Franz Josef Glacier, one of New Zealand's natural wonders and a must sightseeing spot. Only 10kms from the ocean on the unique west coast of New Zealand's South Island, Franz Josef town rests in cool green native bush at the foot of the towering Southern Alps.

After reaching Franz Josef, enjoy photo stops at **Franz Josef Glacier, Fox Glacier and Lake Matheson**.

Named after Sir William Fox, New Zealand's Prime Minister from 1869 to 1872, Fox Glacier describes both the glacier and the nearby village. Like its twin, Franz Josef, the glacier descends from the Southern Alps down into temperate rainforest just 300 metres above sea level. To see the glacier, you can head towards Lake Matheson on Cook Flat Road for magnificent views. Close to Fox Glacier is beautiful Lake Matheson, one of the most photographed lakes in New Zealand. On a clear day it reflects Mount Cook.

Later, have dinner and stay overnight in the hotel at Franz Josef.

DAY 7: FRANZ JOSEF - CHRISTCHURCH	BREAKFAST – DINNER
--	--------------------

After a relaxed breakfast, proceed to Christchurch Railway Station to board the **TranzAlpine scenic train from Greymouth to Christchurch**. This is considered to be one of the most scenic train journey routes in New Zealand. The TranzAlpine train operates between Christchurch, Arthurs Pass and Greymouth - from the east coast to the west coast of New Zealand's South Island.

Travelling west crossing the Canterbury Plains, the train slowly ascends through spectacular gorges and river valleys of the Waimakariri River towards the Southern Alps to the alpine village of Arthurs Pass for a short break before descending through the Otira Tunnel to the West Coast of New Zealand's South Island, through lush alpine beech rain forests.

Next, check-in to the hotel at Christchurch followed by dinner.

DAY 8: CHRISTCHURCH – AUCKLAND - ROTORUA	BREAKFAST – DINNER
---	--------------------

After an early breakfast, check-out from the hotel and proceed to Christchurch airport to board the domestic flight to Auckland. On arrival, proceed to Rotorua. Continue to the geothermal wonderland of Rotorua and travel over the forested Mamaku Ranges to reach Waitomo.

Embark on a unique subterranean adventure on the 45-minute guided tour of the world-famous **Waitomo Glow Worm Caves**. The caves were formed over 30 million years ago and comprise 2 levels. The upper level is dry and includes the entrance to the cave and formations known as the Catacombs, the Pipe Organ and the Banquet Chamber. On the lower level are stream passages and the Cathedral.

Walk down as your local guide brings the caves to life with stories about their history. Then, get onto a boat and marvel at the light display as you glide silently through the starry wonderland of the Glow Worm Grotto.

Later, have dinner in an Indian restaurant and enjoy a comfortable stay in Rotorua.

DAY 9: ROTORUA – TE PUIA	BREAKFAST – DINNER
---------------------------------	--------------------

Today, have a relaxed breakfast in the hotel. In the late afternoon, check-out from the hotel and enjoy the city orientation tour of Rotorua.

Discover Maori history and culture with an entry ticket to **Te Puia Maori Village with Maori cultural show**, located within 10-minutes' drive from central Rotorua.

Catch a rare sight of the iconic kiwi at a nocturnal kiwi house. Walk past bubbling mud pools and steaming springs in the Whakarewarewa Thermal Valley. Marvel at the Pohutu Geyser, which erupts up to 30-meters around 20 times a day. Listen to stories and legends passed down over generations. Learn about Maori settlement in Rotorua. Watch master woodcarvers and artisans trained in the intricate art of weaving flax.

Later, have dinner and stay overnight at Rotorua.



DAY 10: ROTORUA - AUCKLAND	BREAKFAST – DINNER
-----------------------------------	--------------------

After breakfast, embark on a whole day **city tour of Auckland**. Get introduced to the best of Auckland on this tour to the highlights of the region. You can experience the diverse range of nature and heritage New Zealand's most populous urban area has to offer. Drive out to Bastion Point, a coastal piece of land that overlooks the Waitemata Harbor. As you gaze out over the water and the coast, your friendly guide tells you about the role of this site in the 1970s Maori protests against forced land alienation.

Next, visit the **Auckland Sky Tower**. A dizzying 1,076 feet (328 meters) high, the Auckland Sky Tower is not only New Zealand's highest building but also the tallest man-made structure in the Southern Hemisphere. The tower offers unbeatable views of Auckland's skyline, with its distinctive spire visible from all corners of the city.

Next, visit **Kelly Tarlton's Sea Aquarium**, where you can experience the underwater world built by the famous diver and explorer Kelly Tarlton over 30 years ago. The aquarium showcases over 30 live animal exhibits in spectacular habitat displays. The aquarium is one of Auckland's top attractions.

See the cool and calm king penguins and cheeky gentoos interact and swim past as you walk through the Penguin Ice Adventure exhibit. Watch the stingrays glide by and learn about the incredible elephant sharks in Elephant Shark Bay. Stand in awe underneath the Shark Tunnel as great sand tiger sharks swim past and try find the hiding carpet shark Wobbegong. Explore Seahorse Kingdom to see the world's only public display of the rarely seen spiny sea dragons.

Have dinner in an Indian restaurant and stay overnight in Auckland.

DAY 11: AUCKLAND – SINGAPORE - KOLKATA	BREAKFAST – MEAL ON BOARD
---	------------------------------

After breakfast, check-out of the hotel.

Later, proceed to the airport to board the flight back to Kolkata via Singapore.

Reach Kolkata and complete all the immigration and custom formalities before leaving the airport. Bid good-bye to all the friends you have met during the tour. We will see you again on your next tour with us...!!

PACKAGE COST

DOUBLE / TWIN/ TRIPLE SHARING	SINGLE SUPPLEMENT	CHILD WITH BED	CHILD WITHOUT BED
INR 190000 + \$ 2850	INR 190000 + \$ 3850	INR 190000 + \$ 2450	INR 190000 + \$ 2150

PACKAGE COST INCLUDES

- ❖ Economy Class Airfare for round trip to Kolkata.
- ❖ All Taxes mentioned on the ticket as on 1st MARCH 26.
- ❖ All Visa Charges.
- ❖ Accommodation at prefixed 4 star category hotels on double/twin/triple sharing basis.
- ❖ Meals including daily breakfasts and dinners.
- ❖ Transfer to and from and tour of all the places mentioned in the itinerary by luxury coach.
- ❖ Internal transfers & tours (if any mentioned in the itinerary) by cruise, train and flight.
- ❖ Entry fees to places that are included in the itinerary.
- ❖ Compulsory tips amount to coach driver.
- ❖ Travel insurance premium up to 60 years (only the difference will have to be paid).

PACKAGE COST EXCLUDES

- ❖ **5% GST** on the Total Tour Cost (including tips and any optional tour) which is payable at Kolkata by Indian Currency only in favour of Go Everywhere Tours and Travels Pvt. Ltd.
- ❖ **2% T.C.S (Subject to implementation by the govt)** is applicable on the total foreign exchange part (including GST) as and when applicable up to date of travel only in favour of Go Everywhere Tours and Travels Pvt. Ltd., which will be adjusted with your income tax return. **RT-PCR tests cost** (both in India & abroad, if required).
- ❖ **RT-PCR tests cost** (both ways, India & abroad, if required).
- ❖ Insurance premium difference for passengers exceeding 60 years.
- ❖ Expenses and services of personal nature – telephone calls, mineral water, any meals not forming a part of the group itinerary menu, room services orders, mini bar & beverages (alcoholic or nonalcoholic), snacks or refreshments or any other usage, laundry, personal entertainment expenses except for mentioned itinerary items, extra conveyance expenses, if any, entrance charges except for the mentioned itinerary items, any other incidental or medical expenses etc.
- ❖ Cost of optional tours.
- ❖ Any Portage Charges at airports, ports, waterways, stations or any hotels etc.

- ❖ Any services not mentioned in the 'Tour Cost Includes'.
- ❖ NB: The Tour Itinerary as well as the Package Price is subject to change if any unforeseen/unavoidable situations occur before or during the tour AND/OR if there is any increase or decrease of cost per Airline, IATA rule, Visa & Rate of Exchange (ROE) at the time of final payment & departure of the tour, respectively. The package cost which includes all the services (as mentioned in the itinerary etc.) has been framed as on 1st April, 2024. The Tour Itinerary, Airfare, Taxes, Visa Charges, Medical Insurance Premium and other related expenses/fees are subject to change if it requires for any unforeseen and/or unavoidable circumstances before and/or during the tour period.
- ❖ Payment equivalent to Foreign Currency Component (mentioned in package price) including the Tipping & Optional Tour if any, has to be paid in Indian Currency with local cheque/at par cheque only, favoring Go Everywhere Tours and Travels Pvt. Ltd., as per Forex (foreign exchange) Card Board Rate based on the rate of the day of Final Payment as schedule by Go everywhere Tours and Travels Pvt. Ltd. Indian Currency part can be paid in A/C Payee (for local), "A/C Payee at Par" (for outstation), Demand Draft or by Cash.

PAYMENT SCHEDULE

- ❖ Registration amount / Booking Advance of Rs.50000/- (amount may vary time to time) per person is required at the time of booking along with signed Passport & Pan card copies.
- ❖ The Foreign exchange amount equivalent in INR [calculated at the specified exchange rate of the payment date: Inter Banking Rate + Corporate Remittance charge] is payable at least 60 days before the travel date.
- ❖ The final payment [balance amount of the tour cost] should be completed before 30 days prior to the travel date.

ACCOMMODATION

- ✓ **MOUNT COOK - 1 NGT**
THE GODLEY HOTEL OR SIMILAR
- ✓ **QUEENSTOWN - 2 NGTS**
HOLIDAY INN REMARKABLES PARK OR SIMILAR
- ✓ **CHRISTCHURCH - 1 NGT**
QUALITY ELMS HOTEL OR SIMILAR
- ✓ **FRANZ JOSEF - 1 NGT**
HEARTLAND GLACIER COUNTRY HOTEL OR SIMILAR
- ✓ **ROTORUA - 2 NGTS**
VR LAKE RESORT OR SIMILAR
- ✓ **AUCKLAND - 1 NGT**
NOVOTEL OR SIMILAR

TEMPERATURE CHART

SOURCE: **AccuWeather**

NAME OF THE PLACE	TEMPERATURE IN NOVEMBER MARCH	
	MIN. TEMP (IN ° CELSIUS)	MAX TEMP. (IN ° CELSIUS)
CHRISTCHURCH	9	19
MOUNT COOK	3	15
QUEENSTOWN	5	17
FRANZ JOSEF	10	12
ROTORUA	9	18
AUCKLAND	12	20



GO EVERYWHERE TOURS & TRAVELS PVT LTD

REGISTERED OFFICE

SHANTINIKETAN BUILDING, 5TH FLOOR, UNIT NO. – 509,

8, CAMAC STREET, KOLKATA – 700017

T | 033 4604 9800 | 033 4600 2464

P | 7047143332, 8158894453, 6290068949

TOLL FREE NO. | 1800 121 442211

BRANCH OFFICE

AD-68, SALT LAKE CITY, SECTOR 1, KOLKATA- 700064

P | 9831811535

Web: www.goeverywhereholidays.com

Come, Let's, Make Memories...



Accredited
Agent